



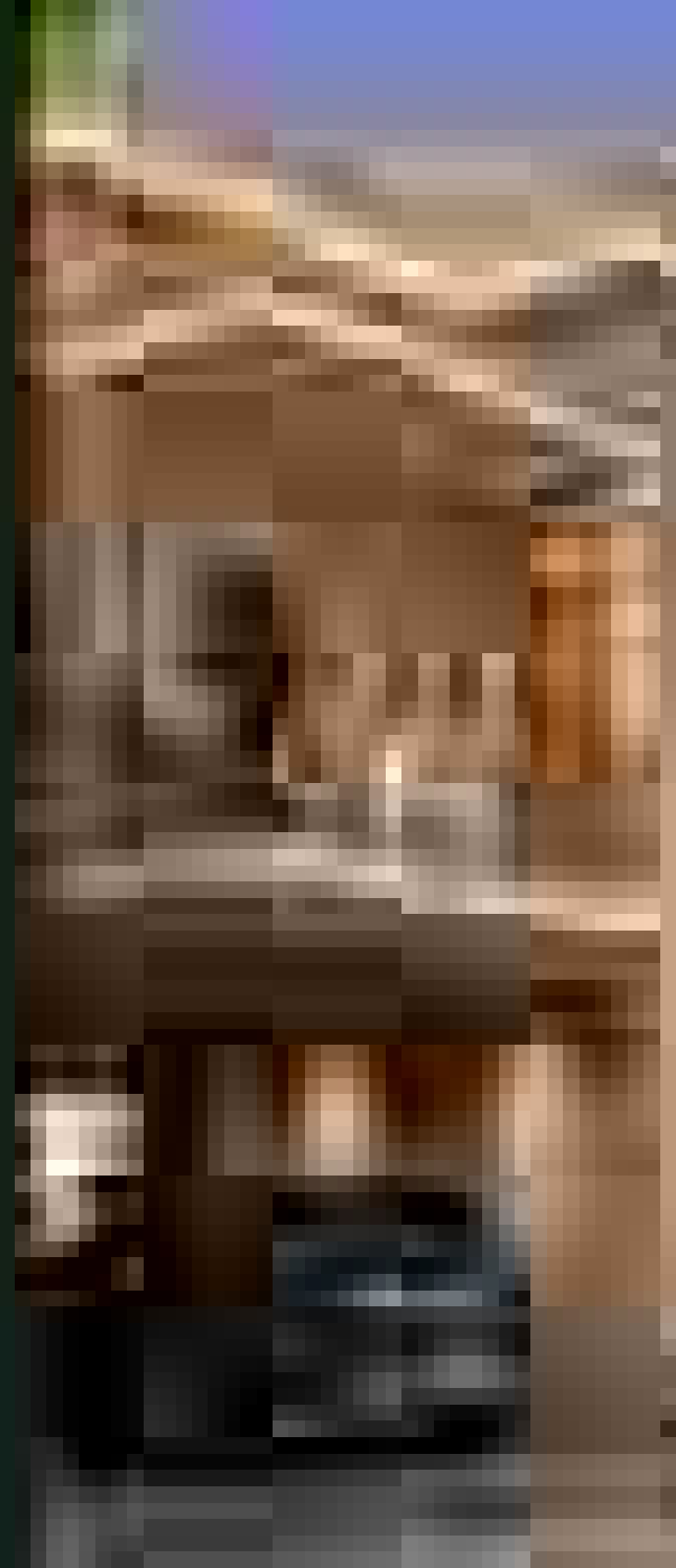


1. The first part of the document discusses the importance of maintaining accurate records of all transactions and activities. It emphasizes that this is crucial for ensuring transparency and accountability in the organization's operations.

2. The second part outlines the various methods and tools used to collect and analyze data. This includes the use of surveys, interviews, and focus groups to gather qualitative information, as well as the use of statistical software and data visualization techniques to process and present quantitative data.

3. The third part of the document focuses on the interpretation of the collected data. It provides a detailed analysis of the findings, highlighting key trends and patterns that have emerged. This analysis is supported by relevant statistical tests and measures of central tendency and dispersion.

4. The final part of the document discusses the implications of the research findings. It identifies the key areas where the organization's performance can be improved and provides specific recommendations for action. These recommendations are based on the evidence gathered during the study and are designed to be practical and achievable.



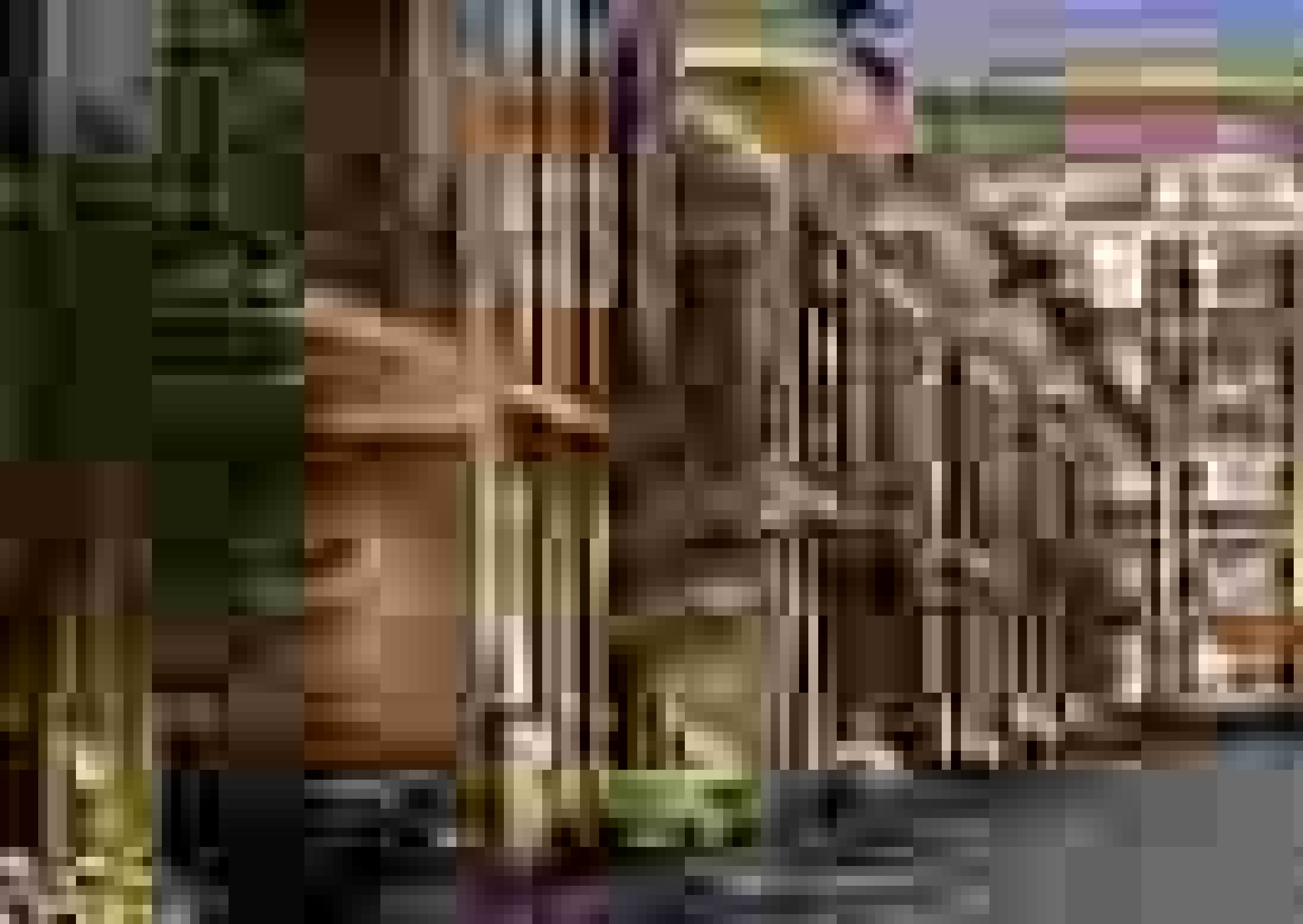


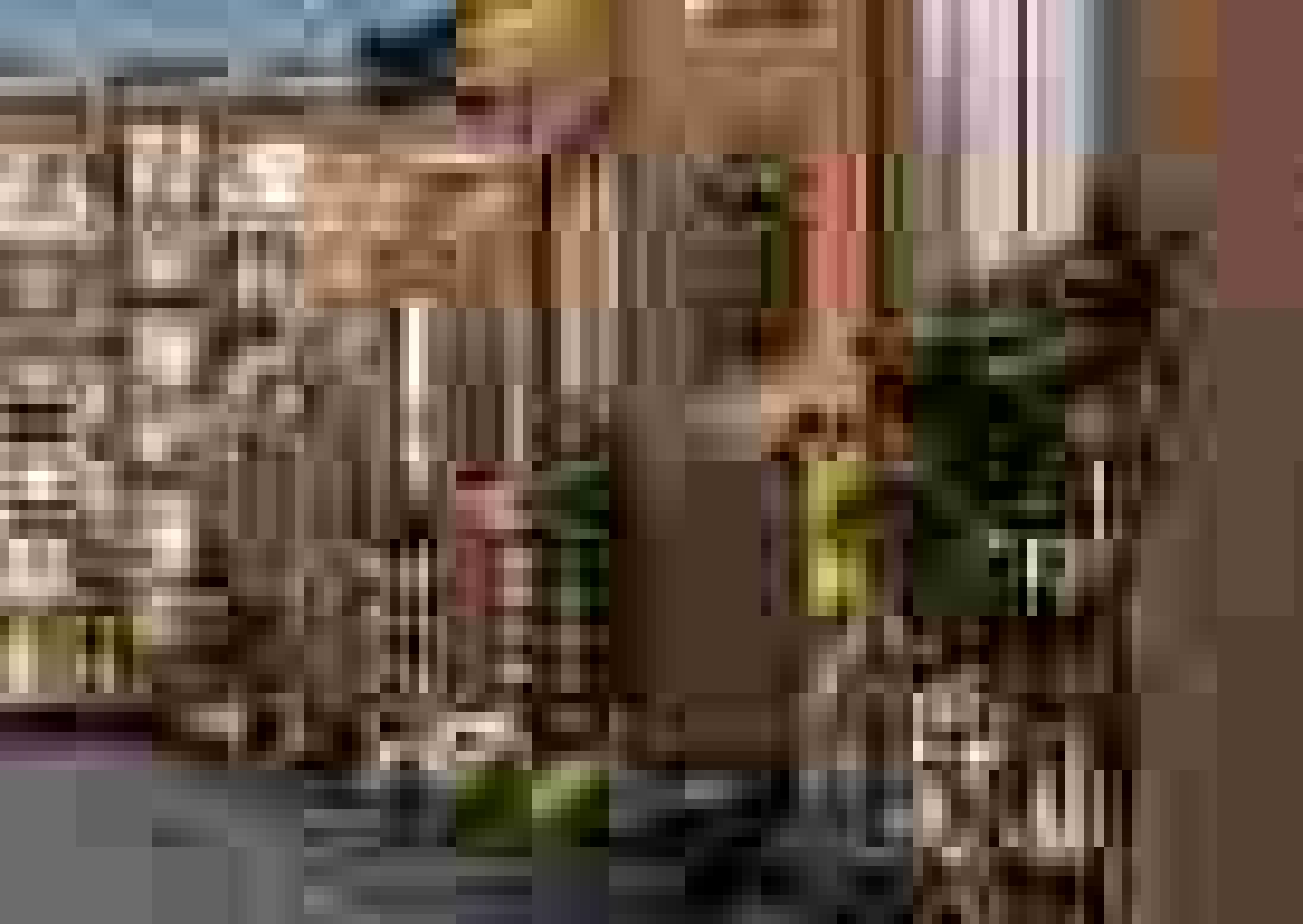






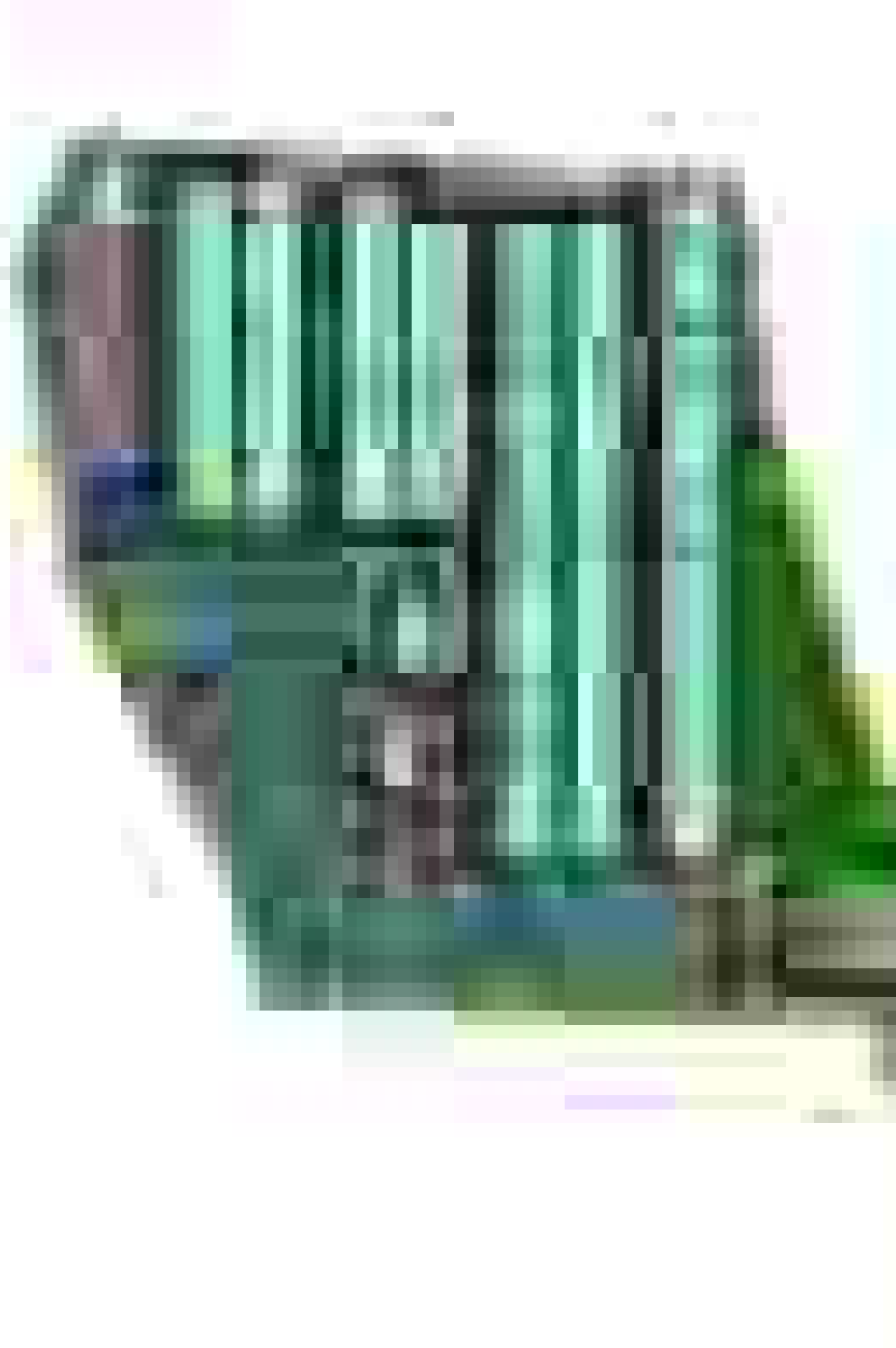












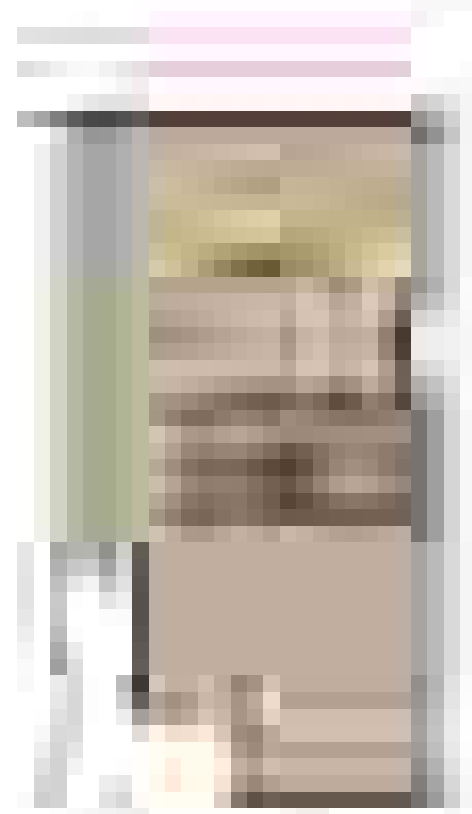
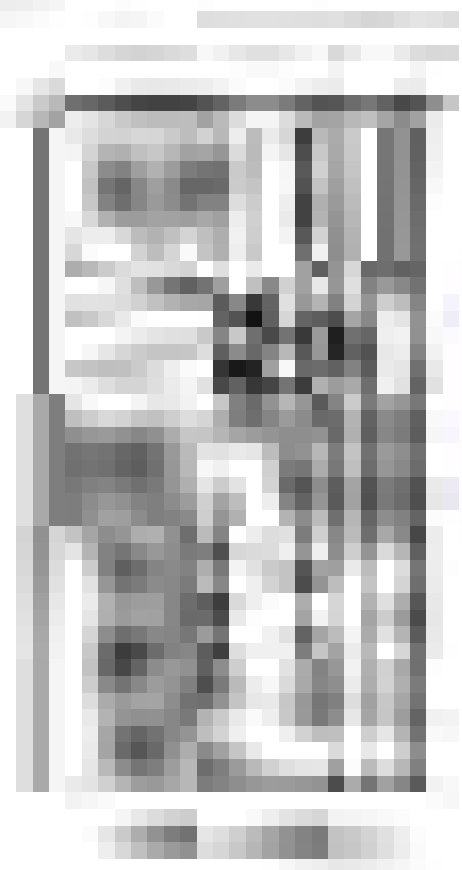
100%

100%

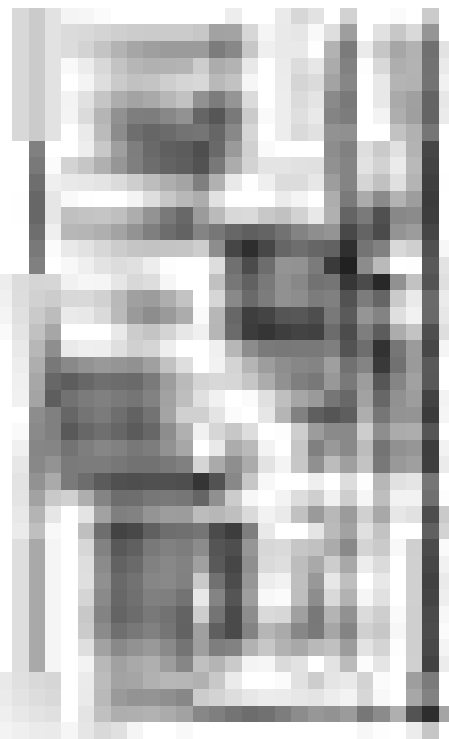
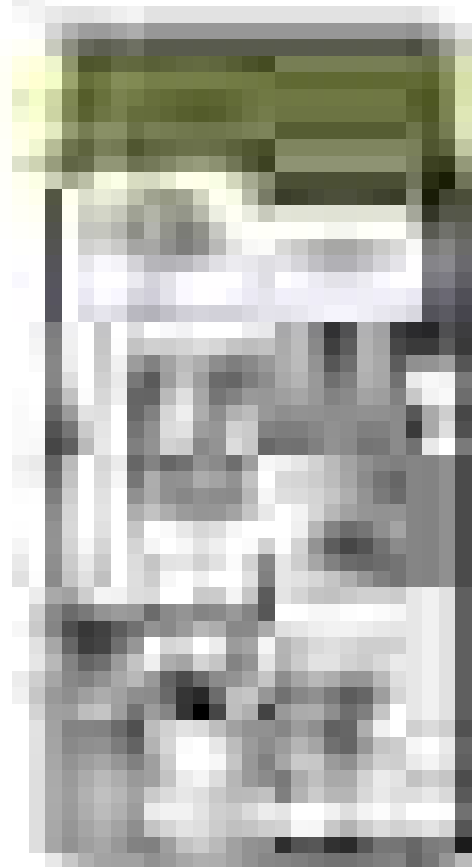
100%



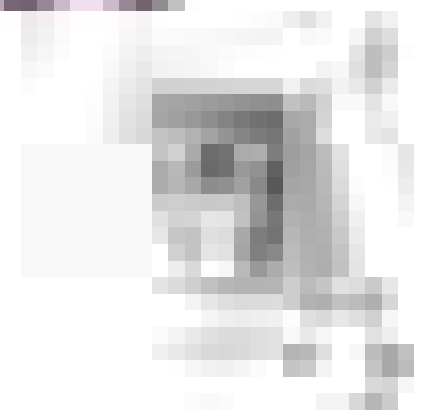
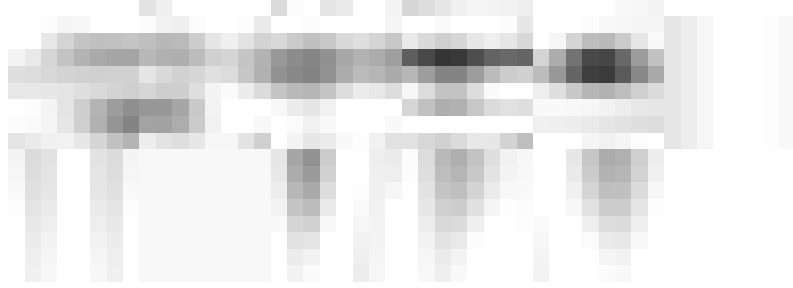
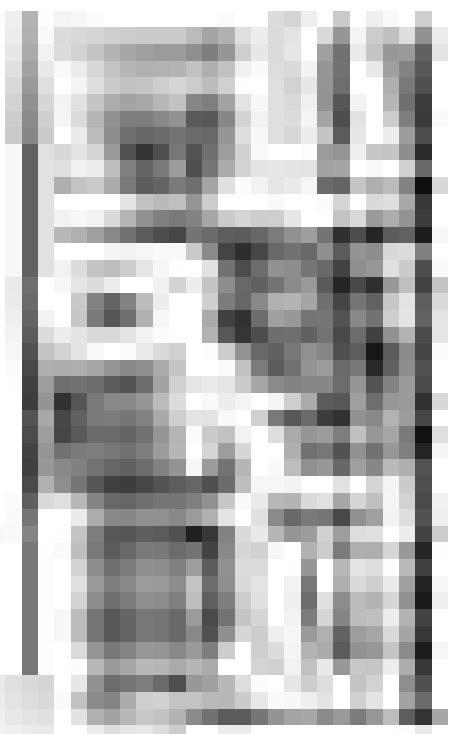
THE HISTORY OF THE

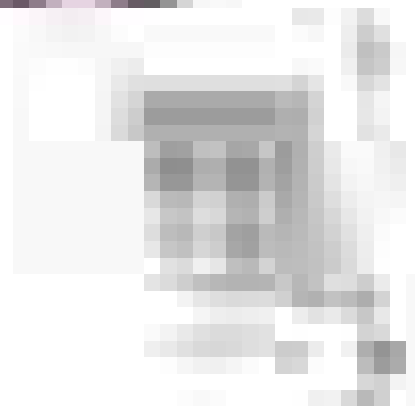
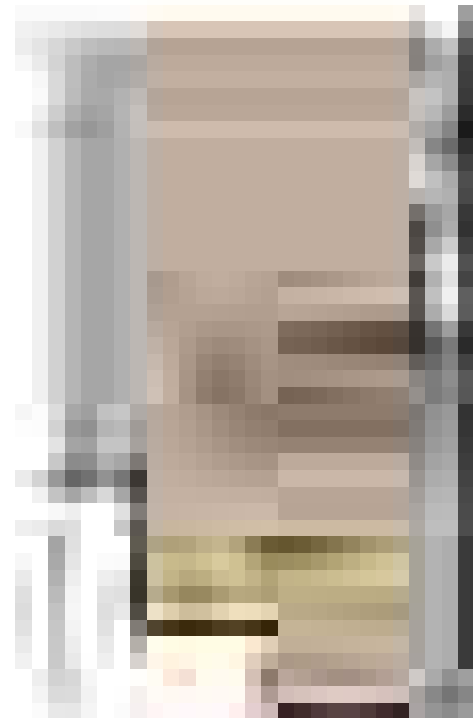
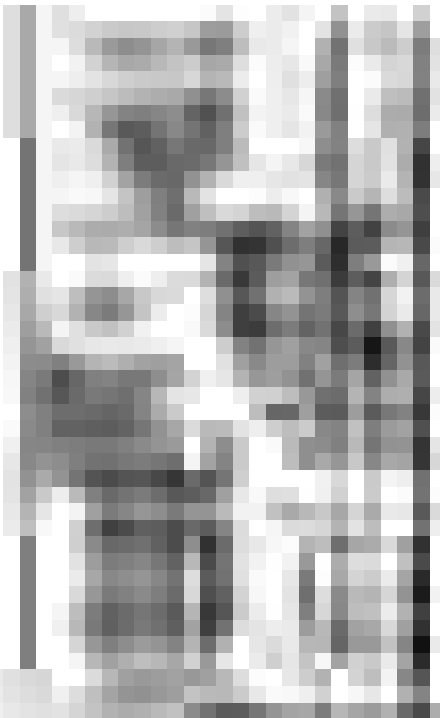
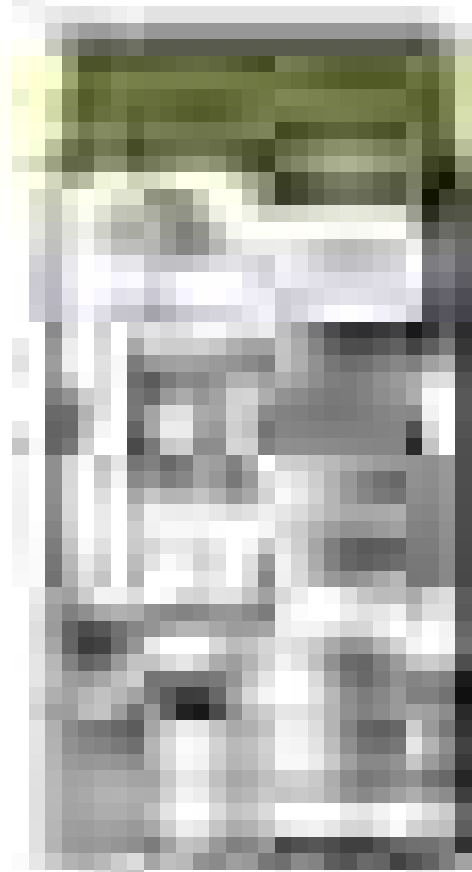


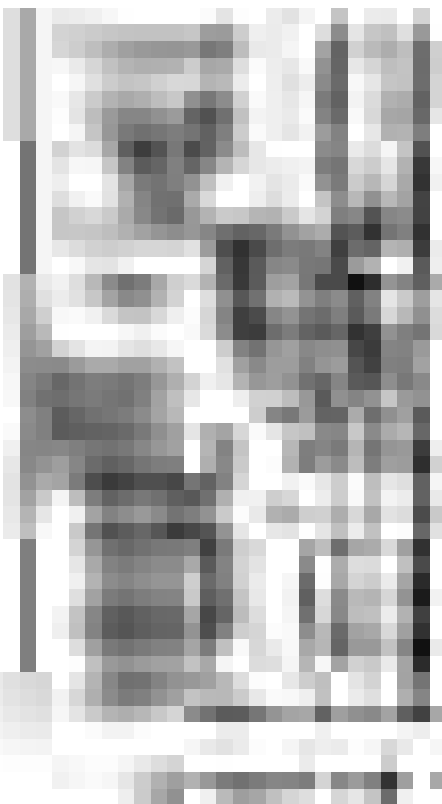
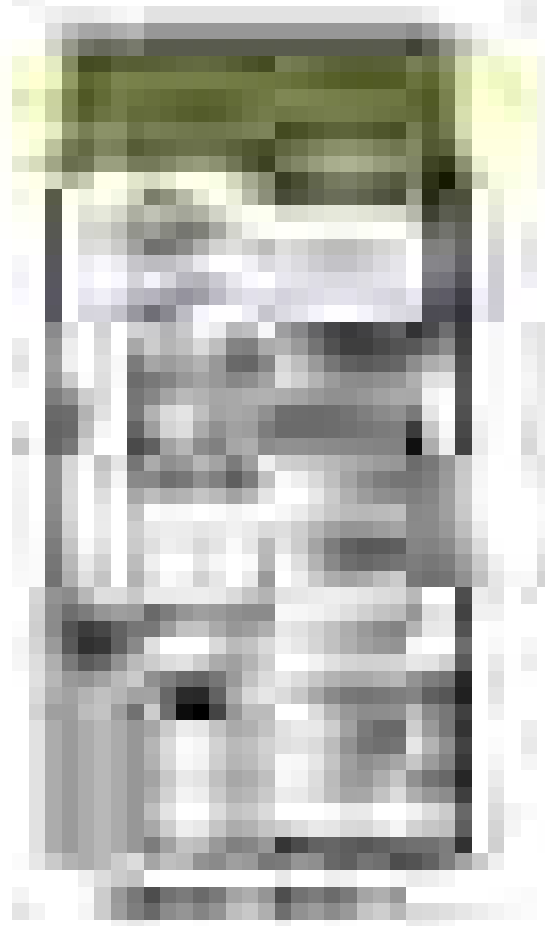
THE HISTORY OF THE

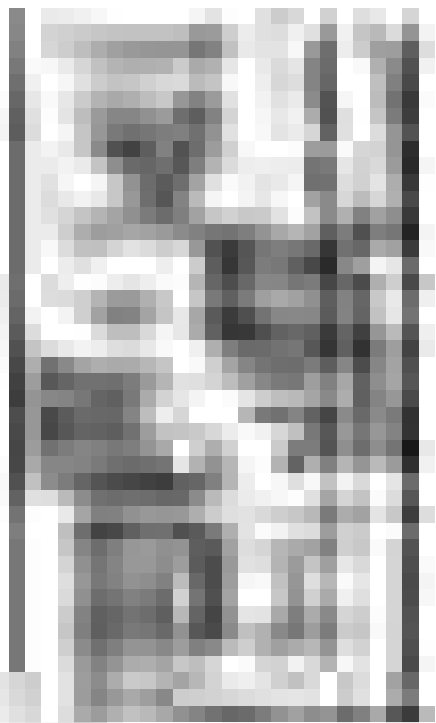


Introduction









1. **Introduction**

2. **Methodology**

3. **Results**

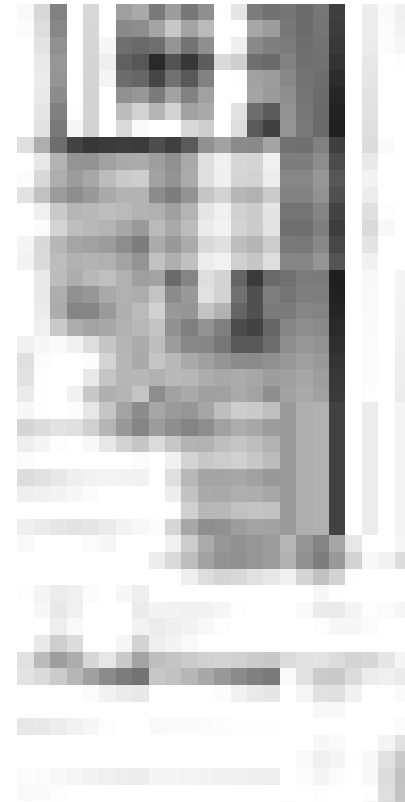
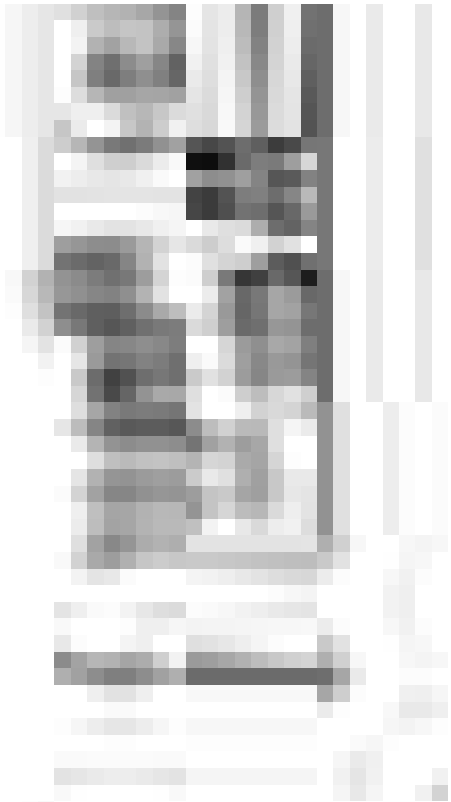
4. **Discussion**

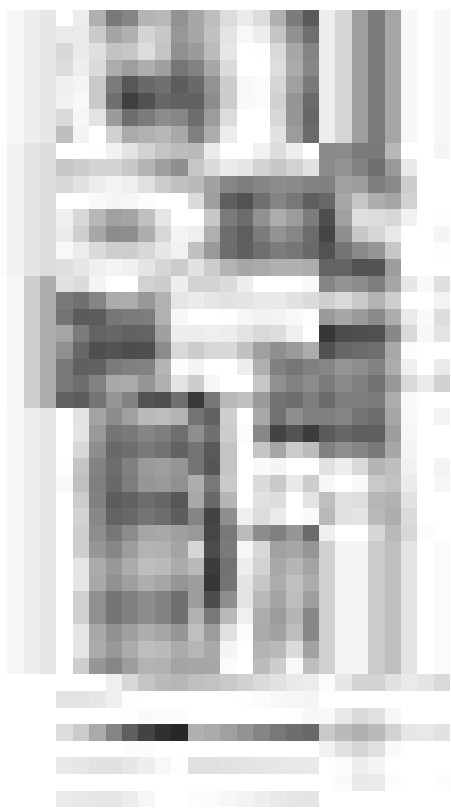
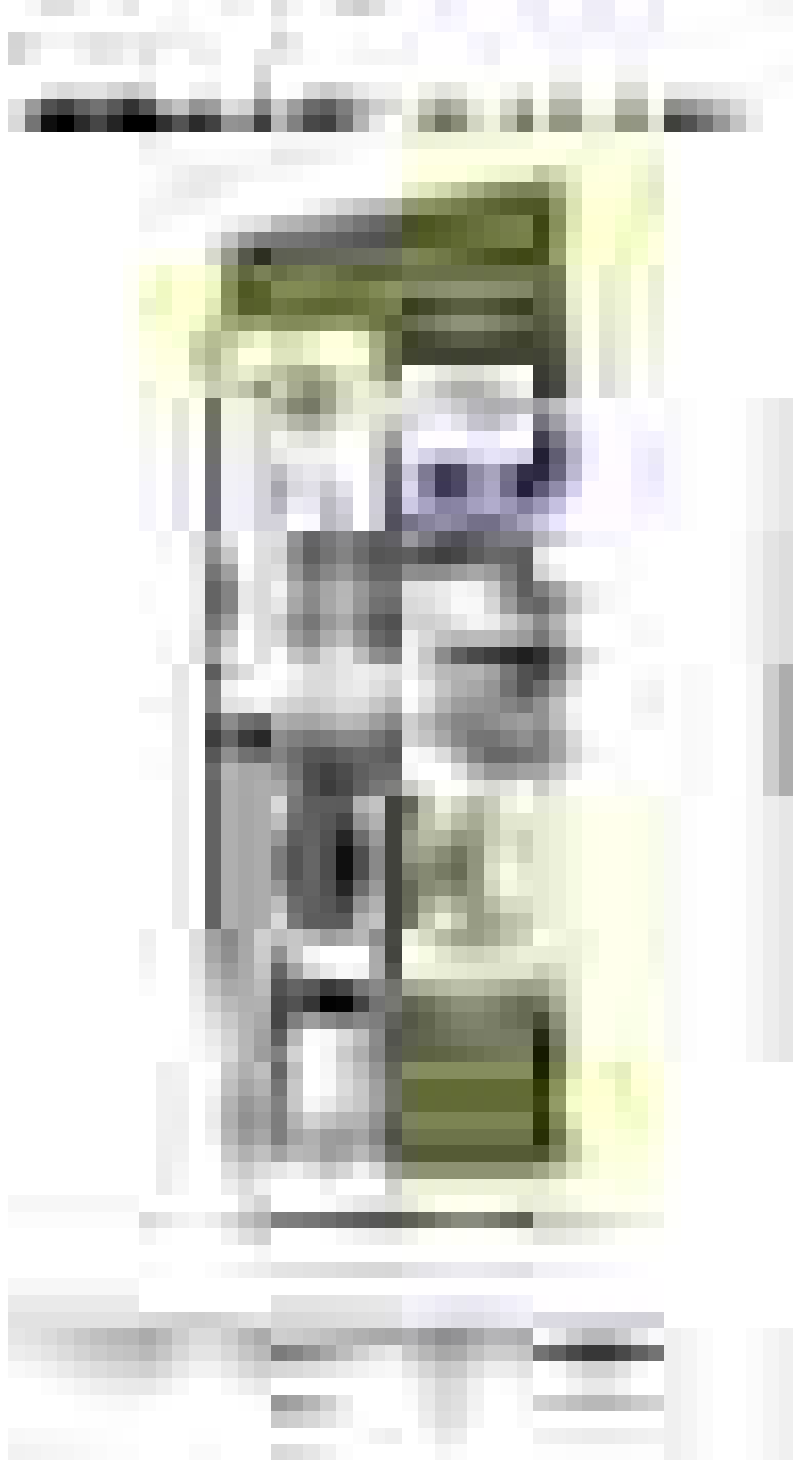
5. **Conclusion**

6. **References**

7. **Appendix**

8. **Index**







WILLIAM W. WILSON
PRESIDENT
WILLIAM W. WILSON
PRESIDENT
WILLIAM W. WILSON
PRESIDENT

1. **Introduction**
2. **Methodology**
3. **Results**
4. **Discussion**
5. **Conclusion**

Abstract
Keywords
References

















